



**Certificate of Analysis**  
Compliance Test

Client Information:

**Extract Labs**

1399 Horizon Ave.  
Lafayette, CO 80026

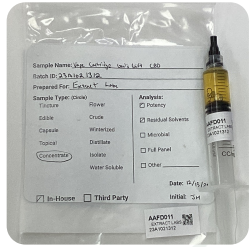
Batch # 23A1021312  
Batch Date: 2023-12-13  
Extracted From: Hemp

Test Reg State: Colorado

Order # EXT231213-050001  
Order Date: 2023-12-13  
Sample # AAFD011

Sampling Date: 2023-12-19  
Lab Batch Date: 2023-12-19  
Completion Date: 2023-12-22

Initial Gross Weight: 7.210 g



Product Image



**Potency**  
Tested



Residual Solvents  
Passed

**Potency 10**  
Specimen Weight: 101.110 mg

Analyte	Dilution (1:n)	LOD (%)	LOQ (%)	Result		SOP13.001 (LCUV)
				(mg/g)	(%)	
CBD	10.000	5.40E-5	0.015	415.000	41.500	
CBG	10.000	2.48E-4	0.015	169.990	16.999	
CBDV	10.000	6.50E-5	0.015	2.680	0.268	
CBC	10.000	1.80E-5	0.015	2.120	0.212	
CBN	10.000	1.40E-5	0.015	0.210	0.021	
CBDA	10.000	1.00E-5	0.015	<LOQ	<LOQ	
CBGA	10.000	8.00E-5	0.015	<LOQ	<LOQ	
Delta-9 THC	10.000	1.30E-5	0.015	<LOQ	<LOQ	
THCA-A	10.000	3.20E-5	0.015	<LOQ	<LOQ	
THCV	10.000	7.00E-6	0.015	<LOQ	<LOQ	
Total Active CBD	10.000			415.000	41.500	
Total Active THC	10.000			<LOQ	<LOQ	

**Tested**



**Potency Summary**

Total Active THC None Detected	Total Active CBD 41.500%
Total CBG 16.999%	Total CBN 0.021%
Other Cannabinoids 0.48%	Total Cannabinoids 59.000%

Aixia Sun Lab Director/Principal Scientist  
D.H.Sc., M.Sc., B.Sc., MT (AAB)



Definitions and Abbreviations used in this report: Total Active CBD = CBD + (CBD-A \* 0.877), \*Total CBDV = CBDV + (CBDVA \* 0.87), Total Active THC = THCA-A \* 0.877 + Delta 9 THC, Total THC = THCV + (THCVA \* 0.87), CBG Total = (CBGA \* 0.877) + CBG, CBN Total = (CBNA \* 0.877) + CBN, Total CBC = CBC + (CBCA \* 0.877), Total THC-O-Acetate = Delta 8 THC-O-Acetate + Delta 9 THC-O-Acetate, Total THCP = Delta8-THCP + Delta9-THCP, Other Cannabinoids Total = Total Cannabinoids - All the listed cannabinoids on the summary section, Total Detected Cannabinoids = Delta8-THC + Delta9-THC + Total CBN + CBT + CBE + Delta8-THCV + Total CBG + Total CBD + Total THCV + CBL + Total THC + Total CBC + Total CBDV + Delta10-THC + Total THC-O-Acetate + Total THCP. (mg/ml) = Milligrams per Milliliter, LOQ = Limit of Quantitation, LOD = Limit of Detection, Dilution = Dilution Factor, (ppb) = Parts per Billion, (%) = Percent, (cfu/g) = Colony Forming Unit per Gram, (µg/g) = Microgram per Gram, (ppm) = Parts per Million, (ppm) = (µg/g), (aw) = Water Activity, (mg/Kg) = Milligram per Kilogram. ACS uses simple acceptance criteria. Passed - Analyte/microbe is not detected or is at the level below the action limit per CO rule 6 CCR 1010-21. Failed - Analyte/microbe is at the level that equal or above the action limit per CO rule 6 CCR 1010-21 Sample not received via laboratory sampling.

This report shall not be reproduced, without written approval, from ACS Laboratory. The results of this report relate only to the material or product analyzed. Test results are confidential unless explicitly waived otherwise. ACS Laboratory is accredited to the ISO/IEC 17025:2017 Standard.



**Certificate of Analysis**  
Compliance Test

Client Information:

**Extract Labs**

1399 Horizon Ave.  
Lafayette, CO 80026

Batch # 23A1021312  
Batch Date: 2023-12-13  
Extracted From: Hemp

Test Reg State: Colorado

Order # EXT231213-050001  
Order Date: 2023-12-13  
Sample # AAFD011

Sampling Date: 2023-12-19  
Lab Batch Date: 2023-12-19  
Completion Date: 2023-12-22

Initial Gross Weight: 7.210 g

**Residual Solvents - CO**  
Specimen Weight: 317.200 mg

**Passed**  
SOP13.039 (GCMS)

Dilution Factor: 500.000

Analyte	LOD (ppm)	LOQ (ppm)	Action Limit (ppm)	Result (ppm)	Analyte	LOD (ppm)	LOQ (ppm)	Action Limit (ppm)	Result (ppm)
Acetone	0.015	2.08	1000	<LOQ	Isopropyl alcohol	0.0048	1.39	1000	<LOQ
Benzene	0.0002	0.02	2	<LOQ	Methanol	0.0005	0.69	600	<LOQ
Butanes	0.4167	2.5	1000	<LOQ	Pentane	0.037	2.08	1000	<LOQ
Ethanol	0.0021	2.78	1000	<LOQ	Propane	0.031	5.83	1000	<LOQ
Ethyl Acetate	0.0012	1.11	1000	<LOQ	Toluene	0.0009	2.92	180	<LOQ
Heptane	0.0013	1.39	1000	130.997	Total Xylenes	0.0001	2.92	430	<LOQ
Hexane	0.068	1.17	60	<LOQ					

Aixia Sun Lab Director/Principal Scientist  
D.H.Sc., M.Sc., B.Sc., MT (AAB)

Definitions are found on page 1

This report shall not be reproduced, without written approval, from ACS Laboratory. The results of this report relate only to the material or product analyzed. Test results are confidential unless explicitly waived otherwise. ACS Laboratory is accredited to the ISO/IEC 17025:2017 Standard.

