



Certificate of Analysis
Compliance Test

Client Information:

Extract Labs

1399 Horizon Ave.
Lafayette, CO 80026

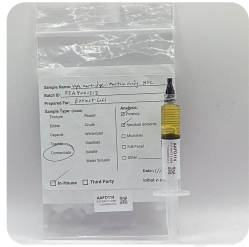
Batch # 23A4001312
Batch Date: 2023-12-15
Extracted From: Hemp

Test Reg State: Colorado

Order # EXT231215-010001
Order Date: 2023-12-15
Sample # AAFD114

Sampling Date: 2023-12-20
Lab Batch Date: 2023-12-20
Completion Date: 2023-12-22

Initial Gross Weight: 10.700 g



Product Image

HHCP **Tested** Residual Solvents **Passed**

HHC Summary

Total HHC
56.616%

HHCP

Specimen Weight: 101.460 mg

Tested
SOP13.050 (LCMS)

Dilution Factor: 5000.000

Analyte	LOD (%)	LOQ (%)	Result (mg/g)	(%) Analyte	LOD (%)	LOQ (%)	Result (mg/g)	(%)
(9R)-HHC	3.6600E-6	0.00075	332.0000	33.2	2.760000E-5	0.00075	0.1940	0.0194
(9S)-HHC	6.6000E-6	0.00075	234.0000	23.4	2.480000E-4	0.00075	0.0140	0.0014
(±)-9β-hydroxy-HHC	7.7800E-6	0.00075	0.1440	0.0144	2.8000E-4	0.00075	<LOQ	<LOQ
1(R)-H4-CBD	7.330000E-7	0.0015	0.0167	0.00167	1.600000E-4	0.00075	<LOQ	<LOQ
1(S)-H4-CBD	6.630000E-7	0.0015	<LOQ	<LOQ	1.440000E-7	0.00075	<LOQ	<LOQ
9(R)-HHCP	3.0900E-5	0.00075	0.0144	0.00144			566.1584	56.61584
9(S)-HHCP	2.5500E-5	0.00075	<LOQ	<LOQ				

Residual Solvents - CO
Specimen Weight: 300.200 mg

Passed
SOP13.039 (GCMS)

Dilution Factor: 500.000

Analyte	LOD (ppm)	LOQ (ppm)	Action Limit (ppm)	Result (ppm)	Analyte	LOD (ppm)	LOQ (ppm)	Action Limit (ppm)	Result (ppm)
Acetone	0.015	2.08	1000	<LOQ	Isopropyl alcohol	0.0048	1.39	1000	<LOQ
Benzene	0.0002	0.02	2	<LOQ	Methanol	0.0005	0.69	600	<LOQ
Butanes	0.4167	2.5	1000	<LOQ	Pentane	0.037	2.08	1000	<LOQ
Ethanol	0.0021	2.78	1000	<LOQ	Propane	0.031	5.83	1000	<LOQ
Ethyl Acetate	0.0012	1.11	1000	<LOQ	Toluene	0.0009	2.92	180	<LOQ
Heptane	0.0013	1.39	1000	<LOQ	Total Xylenes	0.0001	2.92	430	<LOQ
Hexane	0.068	1.17	60	<LOQ					

Aixia Sun
Aixia Sun Lab Director/Principal Scientist
D.H.Sc., M.Sc., B.Sc., MT (AAB)

Definitions and Abbreviations used in this report: Total Active CBD = CBD + (CBD-A * 0.877), *Total CBDV = CBDV + (CBDVA * 0.87), Total Active THC = THCA-A * 0.877 + Delta 9 THC, Total THC = THC + (THCVA * 0.87), CBG Total = (CBGA * 0.877) + CBG, CBN Total = (CBNA * 0.877) + CBN, Total CBC = CBC + (CBCA * 0.877), Total THC-O-Acetate = Delta 8 THC-O-Acetate + Delta 9 THC-O-Acetate, Total THCP = Delta8-THCP + Delta9-THCP, Other Cannabinoids Total = Total Cannabinoids - All the listed cannabinoids on the summary section, Total Detected Cannabinoids = Delta6a10a-THC + Delta8-THC + Total CBN + CBT + CBE + Delta8-THCV + Total CBG + Total CBD + Total THC + CBL + Total CBC + Total CBDV + Delta10-THC + Total THC-O-Acetate + Total THCP. (mg/ml) = Milligrams per Milliliter, LOQ = Limit of Quantitation, LOD = Limit of Detection, Dilution = Dilution Factor, (ppb) = Parts per Billion, (%) = Percent, (cfu/g) = Colony Forming Unit per Gram, (µg/g) = Microgram per Gram, (ppm) = Parts per Million, (ppm) = (µg/g), (aw) = Water Activity, (mg/Kg) = Milligram per Kilogram. ACS uses simple acceptance criteria. Passed - Analyte/microbe is not detected or is at the level below the action limit per CO rule 6 CCR 1010-21. Failed - Analyte/microbe is at the level that equal or above the action limit per CO rule 6 CCR 1010-21 Sample not received via laboratory sampling.

This report shall not be reproduced, without written approval, from ACS Laboratory. The results of this report relate only to the material or product analyzed. Test results are confidential unless explicitly waived otherwise. ACS Laboratory is accredited to the ISO/IEC 17025:2017 Standard. The tests and/or calibrations marked with an "*" are not ISO/IEC 17025:2017 accredited test results.

